



MALINENI LAKSHMAIAH WOMEN'S ENGINEERING COLLEGE

Approved by AICTE, New Delhi, Affiliated to JNTUK, Kakinada : : Accredited by "NBA" for our CSE & ECE and NAAC A+ Grade
Pulladigunta (V) Vatticherukuru (M), Guntur (Dist.)



DEPARTMENT OF

COMPUTER SCIENCE AND ENGINEERING

TECHNICAL

MAGAZINE

ACADEMIC YEAR 2024-2025





INDEX

SL NO.	TITLE	PAGE NO.
1	SKIN SUTRA	3
2	SEIZURES SAFETY	4
3	WEATHER RESPONSIVE CROP PROTECTION	5
4	SEPSIS DETECTION	6
5	SMART FRIDGE MONITORING	7
6	BREASTCHECK GUARD	8
7	CLOUD KITCHENS	12
8	WEARABLE DETECTS HEALTH THEARTS	15
9	AI FITNESS TRACKING SYSTEM	18

.....



CSE DEPARTMENT

Dear Readers,

It gives me immense pleasure to share the Achievement and activities of the Department of Computer Science and Engineering through this newsletter. Our department has always been at the forefront of innovation, research, and excellence in education.

The continuous support of our faculty, students, and stakeholders has been instrumental in achieving our goals.

Over the past semester, we have witnessed remarkable accomplishments in academic projects, technical advancements, and student-driven initiatives. Our focus on emerging technologies such as Artificial Intelligence, Machine Learning, Data Science, and Cybersecurity is preparing our students to excel in the competitive global environment.

I am proud of our students for their participation in hackathons, conferences, and internships, and I extend my heartfelt congratulations to them for their commendable efforts.

I also applaud our faculty members for their dedication to fostering a vibrant learning environment and for their contributions to cutting-edge research.

Looking ahead, we remain committed to creating an ecosystem that promotes holistic development, entrepreneurship, and lifelong learning. I encourage everyone to continue striving for excellence and contributing to the department's growth and success.

Best wishes,

Dr G Rama Swamy

SKIN SUTRA

P. Deepthi Praffulla - 22KE1A05F4 ,
S. Nikhitha - 22KE1A05H5 ,R. Amulya - 22KE1A05G9.

Mentor: Dr.G.Ramaswamy, Prof.

Many individuals are facing challenges in maintaining healthy skin due to the lack of personalized skincare routines. Not knowing proper skin type and using a skincare routine doesn't make any sense. By considering these problems and solutions we came up with an idea for the advancement of skin analysis technology we want to focus on moisture and oil content in our skin rather than the skin type. We are going to detect the skin's oil level and moisture content in a person's skin. By this, we'll be providing detailed and personalized skin care routines to every person accordingly. we will be giving you real-time data and the analysis of your skin using AI application.

This IoT-based skin technology is revolutionizing skin health by knowing our skin's oil and moisture content level and recommending the products that should be used for better outcomes and skin health.

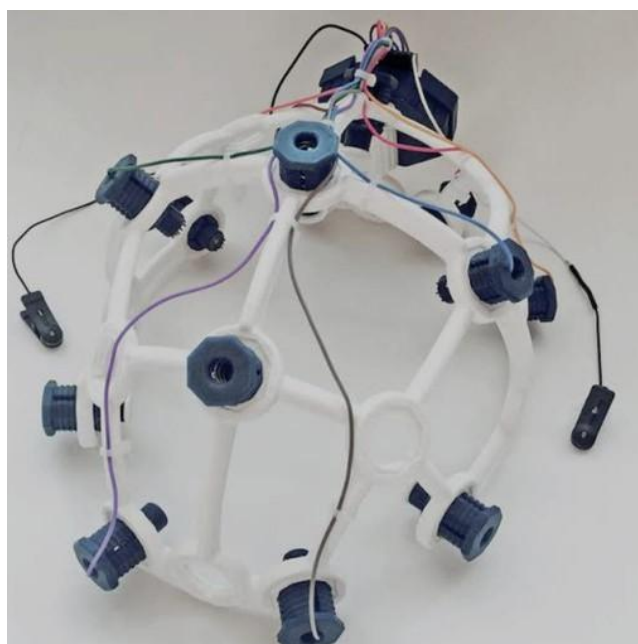


SEIZURES SAFETY

J.Chandrika - 22KE1A0579 ,V.Prasanna- 22KE1A0B1,
M. Rajeshwari- 22KE1A05B5, G.Durga - 22KE1A0569.

Mentor: Mr. A.Rama Krishna , Asst.Prof.

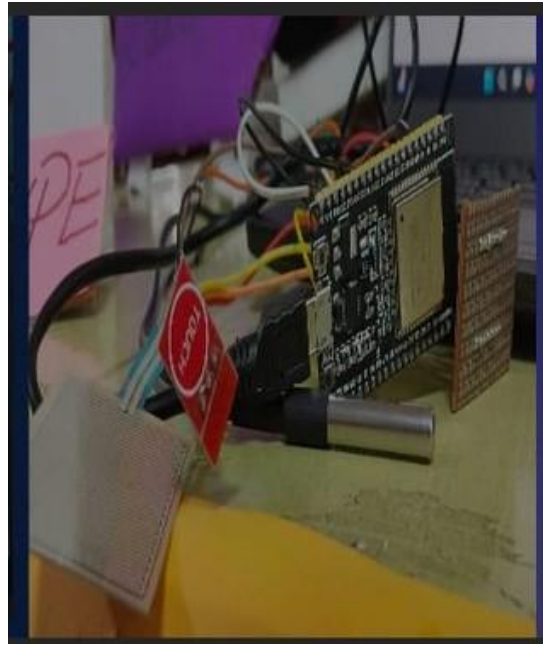
Seizures can be unpredictable, and timely medical help may not always be available. Many people with epilepsy experience sudden, unexpected seizures that can be dangerous and frightening. We don't know when they might occur again for those who have already experienced fits. Seizures can also occur during pregnancy and delivery. The device continuously monitors physiological signals such as heart rate, skin conductance, and movement patterns to detect potential seizures. Designed for comfort and daily wear, ensuring it doesn't interfere with the user's daily activities. Automatically sends alerts to emergency contacts, caregivers, or nearby medical professionals. Users can set preferences for who gets alerted and how, including SMS, notifications. Immediate user's system works across different platforms and can integrate with other smart home devices.



WEATHER RESPONSIVE CROP PROTECTION

N.Navya - 22KE1A05E3 ,Y.Gayathri - 22KE1A05I3 ,
K.Meghana - 22KE1A05J6.

Mentor:Dr. N.Charles Jaya Rao, Prof.



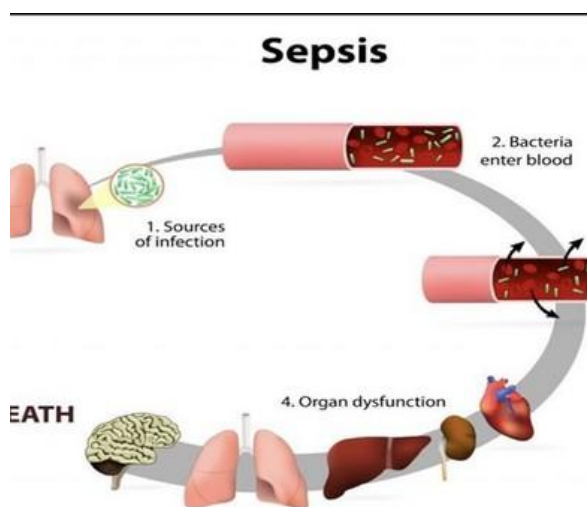
Farmers face significant financial losses due to unpredictable weather events, such as heavy rainfall, hailstorms, and extreme heat. Traditional methods of protecting crops, such as manual covering systems, require considerable manpower and time, often hindering efficiency. The market currently lacks affordable, automated solutions that can respond effectively to real-time weather changes, leaving farmers vulnerable to crop damage. Our system provides an affordable and scalable solution to protect crops from weather challenges, enhancing productivity and profitability. Our weather-responsive technology helps farmers achieve higher crop yields while promoting sustainable farming practices.

EARLY DETECTION OF SEPSIS DISEASE

Sk. Nafisa - 22KE1A05D3 , M. Gayathri - 22KE1A05C8 ,N. Sesha ratnam
- 22KE1A05D5 , N. Shreya -22KE1A05E7.

Mentor: Mrs.M.Bharathi Rani ,Asst. Prof.

In this generation, people are recognizing the Disease after they are suffering. In the starting stage itself, they are not aware of shock they think that it is just an abnormal infection then the problem goes to the next level and it may lead to death. It may go to a critical situation where the whole Immune system gets damaged. And there is no cure for this disease permanent. Sepsis is one of the most frequent causes worldwide. Sepsis is a life-threatening condition that happens when the body's immune system has an extreme response to an infection causing organ dysfunction. The final purpose of our project is to detect sepsis by using sensors in the early stages. So the patient can take treatment in the ICU and lifespan may increase. Without consulting the doctor the patient will know the stage of the disease.



SMART FRIDGE MONITORING

N.Bhagya sri- 22KE1A05E0, N.Vidyullatha - 22KE1A05E1
,P.Tejaswini - 22KE1A05F6.

Mentor: Ms.D.Vijaya lakshmi, Asst.Prof.

Imagine a fridge that helps you prevent food waste, and remembers what's inside. That's the power of smart fridges! They use AI and the internet to monitor your food, ensuring it stays fresh and alerting you to potential problems.

Leaving the fridge door open wastes and can spoiled food is wasteful and can create unpleasant odors.

Leaks in the water storage area can damage the fridge and create mold. Improves the food preservation and reduces spoilages.reduce food waste and energy consumption.

Provides real time alerts for optimal refrigerator-conditions.

Promotes-smarter.and more sustainable human management.



BREASTCHECK GUARD

P.Sravanthi - 22KE1A05F9, S.Rajani - 22KE1A0H6,
R.Hari priya - 22KE1A05H0, Ch.Rupa Swathi - 22KE1A05G8.

Mentor: Mrs. G.Sri Lakshmi, Asst.Prof.



Breast cancer is a leading cause. Our automated breast cancer detection system offers a promising solution for timely intervention and Supports our project for a cancer-free future. Reducing the number of cancer-related deaths among women worldwide, with over 685,000 deaths annually. Early detection is crucial for improving survival rates, with a 90% 5-year survival rate when detected in the early stages (Stage 0 or 1). Breast cancer checking and whether lumps are formed or not. If lumps are formed detect the lumps with Gadget. If the gadget sounds positive then breast cancer is positive.

The journey of Dream

In the quiet night, beneath the stars' gleam, We embark on the journey of a dream. Whispers of hope in the cool breeze, Carving our paths through ancient trees.

With every step, our hearts beat strong, In the rhythm of an unending song. We chase the sunrise, bold and bright, Embracing shadows, welcoming light.

The road is winding, the journey long, But courage and passion keep us strong. Through valleys deep and mountains high, We find our wings and learn to fly.

For in our dreams, the world unfolds, Stories of wonder, yet to be told. So let us journey, far and wide, With dreams as our compass, as our guide.



P.DEEPTHI PRAFFULLA
22KE1A05F4



ARTS BY: AMMULU.M 22KE1A05C9

"In each of us lies the potential to achieve greatness. The journey may be tough, but with perseverance and a positive mindset, we can conquer any challenge. Let us embrace learning, support one another, and strive to make a difference in the world. Together, we can shape a brighter future."

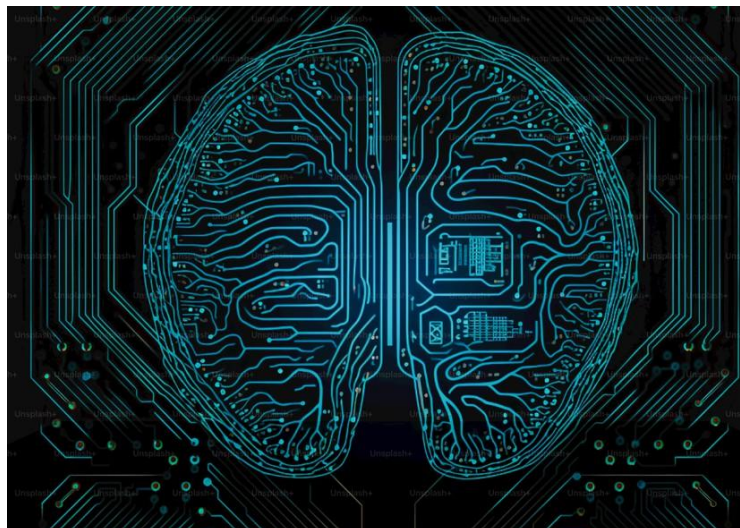
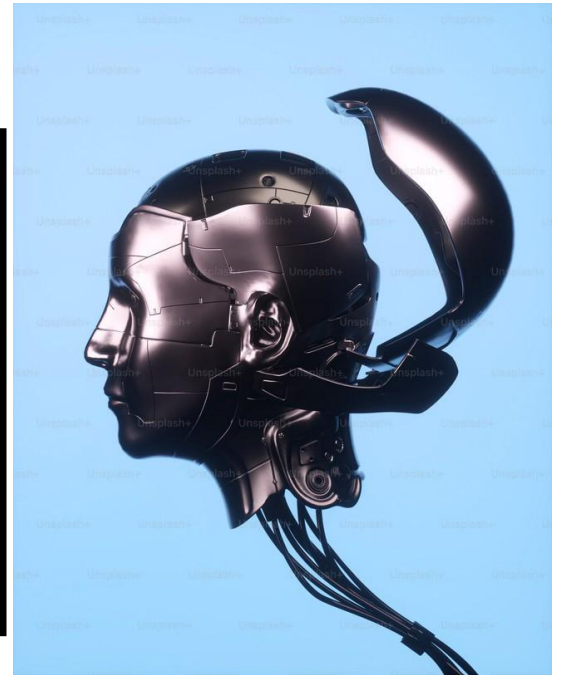
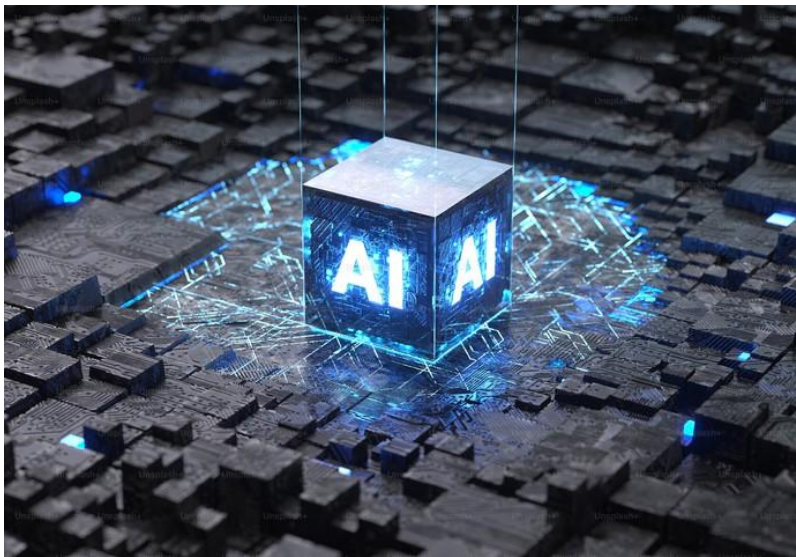


"Self-love is your greatest superpower. Embrace it and shine."

Preserving Cultural Heritage: The Role of AI

Cultural heritage includes artifacts and traditions passed down through generations. In today's fast-paced world, AI is stepping up to help preserve these treasures.

AI is a powerful tool for preserving our cultural heritage. By embracing this technology, we can safeguard our past while paving the way for the future.



CLOUD KITCHENS

Y.Govardhani-2KE1A05M8 , T.Indu - 22KE1A05K3 ,
S.Vishnu Priya - 22GE1A0575

Mentor : Mr. B.Rama Raju , Asst.Prof.

With delivery locations across the city and nearby, you'll gain instant meal prep food to an entirely new customers base.

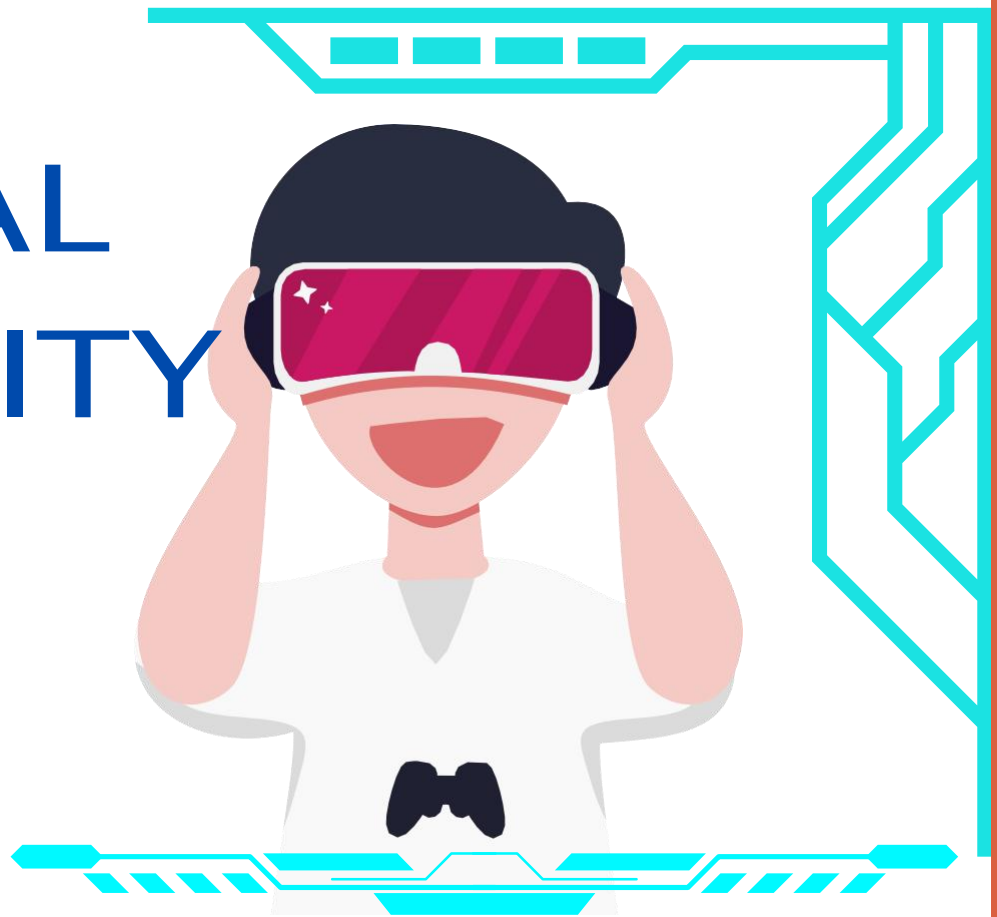


Compared to the others these are with high-quality food setup and make the customer have their meal at ease. less stressful, more accurate, and also with minimal cost we can get your freshly savoured cuisines.



Due to the highly invested kitchens in some websites, ordering better food became remorse, and the cloud kitchens had the great impact on them. cloud kitchens are just the kitchens that work behind the scenes with the pickup tech and convenient packaging which make the customer eat at ease.

VIRTUAL REALITY



Revolutionizing modern education by creating immersive, interactive learning environments. It allows students to explore historical sites, conduct virtual lab experiments, and visualize complex concepts in 3D, enhancing engagement and understanding. VR also facilitates remote learning, making education more accessible and inclusive. By bridging the gap between theoretical knowledge and practical experience, VR is transforming the way we learn and teach.

WEARABLE DETECTS HEALTH THEARTS

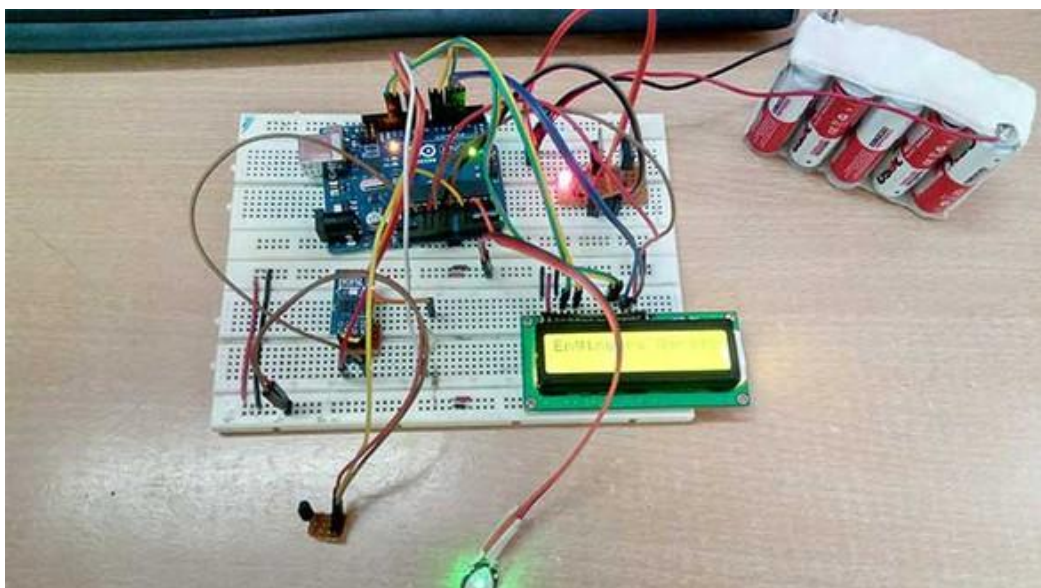
K.Salini - 22KE1A05I1 ,M.Meghana Chowdary - 22KE1A05C2,

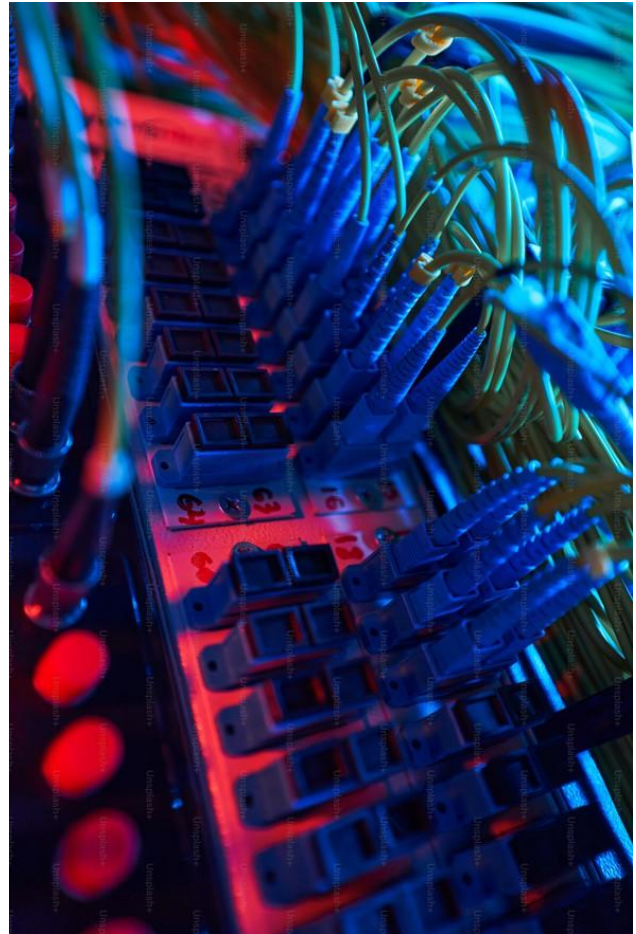
T.Mounika - 22KE1A05J8 , V.Sudha Devi - 22KE1A05M4

Mentor: Mrs.K.Akhila , Asst.Prof.

Late detection Develop a wearable oxygen sensor designed for continuous and non-invasive monitoring of oxygen levels, enabling early detection of tumors and heart failure. The sensor integrates with a mobile app to provide real-time data and insights, enhancing patient engagement and proactive health management. This solution reduces mortality rates, improves patient outcomes, and supports a healthier, more informed population by addressing critical health conditions through cutting-edge technology.

Ion of tumors and heart failure pose severe health risks due to inconvenient and limited oxygen level monitoring methods. A wearable oxygen sensor can revolutionize early diagnosis, enabling timely medical intervention and improving patient outcomes. This innovation has the potential to reduce mortality rates and enhance the quality of life for individuals with these critical health conditions.





QUANTUM COMPUTING

Quantum computing has made significant advancements with breakthroughs in error correction, diamond-based systems, and increased investments. These developments are revolutionizing fields like cybersecurity, AI, and complex problem-solving capabilities, offering unprecedented computational power and paving the way for future technological innovations.

Threads of Empathy

- In gentle hearts, compassion blooms and flows,
We see ourselves in every tear that glows.
Embrace the soul within, a tender art, For love,
both shared and self, sustains the heart.
- With empathy, we bridge the silent gaps, In
kindness, find the strength to mend life's maps.
Each wound, a story, shared in soft embrace,
Healing whispers trace the human race.
- Self-love, a garden where our spirits grow,
Through nurturing ourselves, we learn to
know. The worth within, a light that never
fades, In unity, our boundless strength invades.
- Empathy's touch, a balm for every soul,
Together, we become a greater whole. In love
for self and others, we can find, A world more
kind, where hearts and spirits bind.
- With every act of kindness, hearts align,
Creating ripples in the sands of time. Embrace
the love within, let it shine bright, For empathy
and self-love, our guiding light.

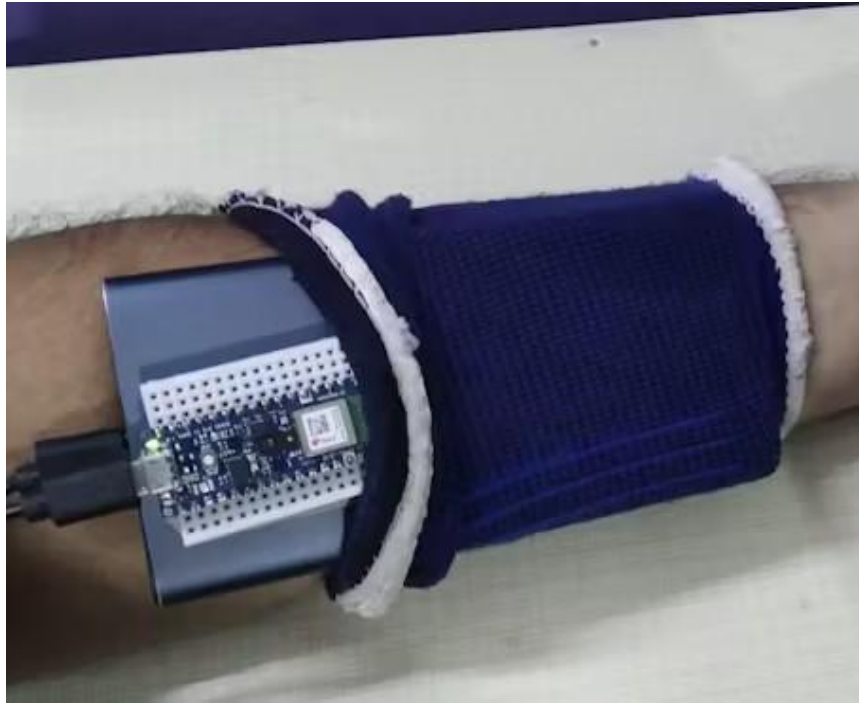


AI FITNESS TRACKING SYSTEM

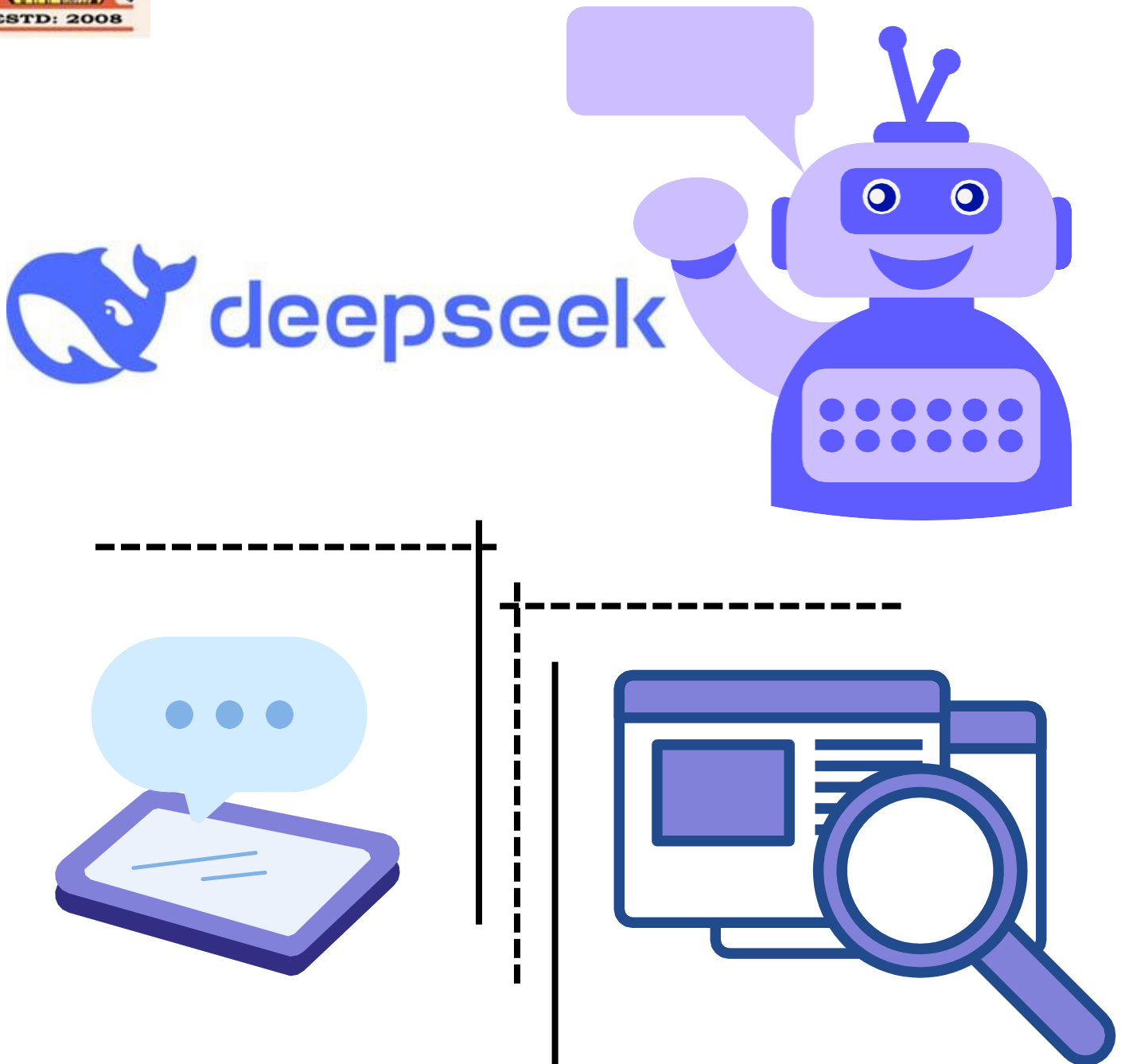
P.Nirmala - 23KE1A05I2, S.Kalpana - 23KE1A05G2,

P.Sunitha - 23KE1A05d6 , M.Anitha - 23KE1A05E5

Mentor: Mrs.Y.Saraswathi , Asst.Prof.



An AI-powered fitness tracking system uses cameras and depth sensors to capture movements, analyze form, provide real-time feedback, track performance, and offer personalized workout plans. This technology helps users improve exercise routines effectively, ensuring optimal results, consistency, injury prevention, and workout efficiency. By continuously monitoring and adjusting recommendations, it motivates users with progress tracking and tailored suggestions, transforming their fitness journey into a more engaging, data-driven, and successful experience. This approach maximizes workout efficiency, helping users achieve their fitness goals.



DeepSeek is an advanced AI research company that focuses on developing high-performance language models and AI solutions. Their flagship model, DeepSeek-V3, is known for its significant breakthroughs in inference speed and accuracy, making it a top contender among open-source and closed-source models



MALINENI LAKSHMAIAH **WOMEN'S ENGINEERING COLLEGE**



Approved by AICTE, New Delhi, Affiliated to JNTUK, Kakinada : : Accredited by "NBA" for our CSE & ECE and NAAC A+ Grade
Pulladigunta (V) Vatticherukuru (M), Guntur (Dist.)

